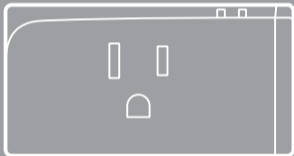


SONOFF



S S31/S31 Lite

User manual V1.2

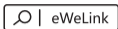


S31: Wi-Fi Smart Plug with Power Monitoring US Type

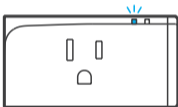
S31 Lite: Wi-Fi Smart Plug US Type

Operating Instruction

1 Download the eWeLink APP



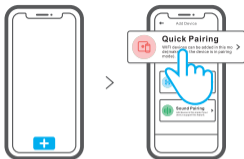
2 Power on



After powering on, the device will enter the quick pairing mode (Touch) during the first use. The Wi-Fi LED indicator changes in a cycle of two short and one long flash.

- ⓘ The device will exit the quick pairing mode (Touch), if not paired within 3mins. If you want to enter this mode, please long press the pairing button for about 5s until the Wi-Fi LED indicator changes in a cycle of two short and one long flash and release.

3 Add the device



Tap “+” and select “Quick Pairing”, then operate following the prompt on the APP.

Compatible Pairing Mode

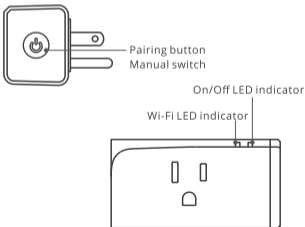
If you fail to enter Quick Pairing Mode (Touch), please try “Compatible Pairing Mode ” to pair.

- 1 Long press pairing button for 5s until the Wi-Fi LED indicator changes in a cycle of two short flashes and one long flash and release. Long press pairing button for 5s again until the Wi-Fi LED indicator flashes quickly, then the device enters Compatible Pairing Mode.
- 2 Tap “+” and select “Compatible Pairing Mode ” on APP. Select Wi-Fi SSID with ITEAD-***** and enter the password 12345678, and then go back to eWeLink APP and tap “Next”. Be patient until pairing completes.

Specifications

Model	S31/S31 Lite
Input	120V AC 60Hz
Output	120V AC 60Hz
Max. current	15A
Operating temp.	0-30°C
Operating systems	(Android 4.1 & iOS 9.0) or higher
Wi-Fi	IEEE 802.11 b/g/n 2.4GHz
Material	PC V0
Dimension	76x40x33mm

Product Introduction



Features

Turn on/off the devices from anywhere, schedule power on/off and share devices with your family to control.



Remote Control



Timing Schedule



Voice Control



Share Control



Power Monitoring



Sync Status



Camera Feature



Over-load Protection



LAN Control

ⓘ Power monitoring is not available for S31 Lite.

Switch Network

If you need to change the network, long press the pairing button for 5s until the Wi-Fi LED indicator changes in a cycle of two short and one long flash and release, then the device enters quick pairing mode and you can pair again.



Factory Reset

Deleting the device on the eWeLink app indicates you restore it to factory setting.

Common Problems

Q: Why my device stays "Offline"?

A: The newly added device needs 1 - 2mins to connect Wi-Fi and network. If it stays offline for a long time, please judge these problems by the blue Wi-Fi indicator status:

1. The blue Wi-Fi indicator quickly flashes once per second, which means that the switch failed to connect your Wi-Fi:

- ① Maybe you have entered a wrong Wi-Fi password.
- ② Maybe there's too much distance between the switch your router or the environment causes interference, consider getting close to the router. If failed, please add it again.
- ③ The 5G Wi-Fi network is not supported and only supports the 2.4GHz wireless network.
- ④ Maybe the MAC address filtering is open. Please turn it off.

If none of the above methods solved the problem, you can open the mobile data network on your phone to create a Wi-Fi hotspot, then add the device again.

2. Blue indicator quickly flashes twice per second, which means your device has connected to Wi-Fi but failed to connect to the server.

Ensure a steady enough network. If double flash occurs frequently, which means you access an unsteady network, not the product problem. If the network is normal, try to turn off the power to restart the switch.

Scan the QR code to read the voice control instruction for Amazon Echo and Google Home.



<https://sonoff.tech/usermanuals>

Scan the QR code or visit the website to learn about the latest user manual and help.

Shipping and Storage Temperature	-40°C to 60°C
Use Method	Plug and Play
Software Class	A
Overvoltage Category	II
Pollution Degree	2
Protection against Electric Shock	Insulation-encased Class I
Environmental	IP20 (NEMA 1)
Automatic Action	Micro-disconnection (Type 1.B)

FCC Warning

Changes or modifications not expressly approved by the party responsible for compliance could void the user's authority to operate the equipment.

This device complies with part 15 of the FCC Rules. Operation is subject to the following two conditions: (1) This device may not cause harmful interference, and (2) this device must accept any interference received, including interference that may cause undesired operation.

FCC Radiation Exposure Statement:

This equipment complies with FCC radiation exposure limits set forth for an uncontrolled environment. This equipment should be installed and operated with minimum distance 20cm between the radiator & your body. This transmitter must not be co-located or operating in conjunction with any other antenna or transmitter.

Note:

This equipment has been tested and found to comply with the limits for a Class B digital device, pursuant to part 15 of the FCC Rules. These limits are designed to provide reasonable protection against harmful interference in a residential installation. This equipment generates, uses and can radiate radio frequency energy and, if not installed and used in accordance with the instructions, may cause harmful interference to radio communications. However, there is no guarantee that interference will not occur in a particular installation. If this equipment does cause harmful interference to radio or television reception, which can be determined by turning the equipment off and on, the user is encouraged to try to correct the interference by one or more of the following measures:

- Reorient or relocate the receiving antenna.
- Increase the separation between the equipment and receiver.
- Connect the equipment into an outlet on a circuit different from that to which the receiver is connected.
- Consult the dealer or an experienced radio/TV technician for help.

Hereby, Shenzhen Sonoff Technologies Co., Ltd. declares that the radio equipment type S31/S31 Lite is in compliance with Directive 2014/53/EU. The full text of the EU declaration of conformity is available at the following internet address:

<https://sonoff.tech/usermanuals>

TX Frequency:

WiFi: 2412-2472MHz

RX Frequency:

WiFi: 2412-2472MHz

Output Power:

21.34dBm(802.11b), 21.26dBm(802.11g),
23.16dBm(802.11n20)

SONOFF

Shenzhen Sonoff Technologies Co., Ltd.

1001, BLDG8, Lianhua Industrial Park, shenzhen,
GD, China

ZIP code: 518000

Website: sonoff.tech

MADE IN CHINA



LIKE IT!

Glad to know you are satisfied with SONOFF products. It would mean a lot to us if you can take a minute to share your buying experience.



Share it on Amazon



Share it on your social media



Share it with your friends and family

Get the latest news by following us:

New arrival
Promotion
How-to videos

HAVE A PROBLEM?

We are so sorry for the inconvenience caused by the product.

Please contact us for help via the email address below.



support@itead.cc

We will get back to you as soon as possible.



YouTube



facebook